

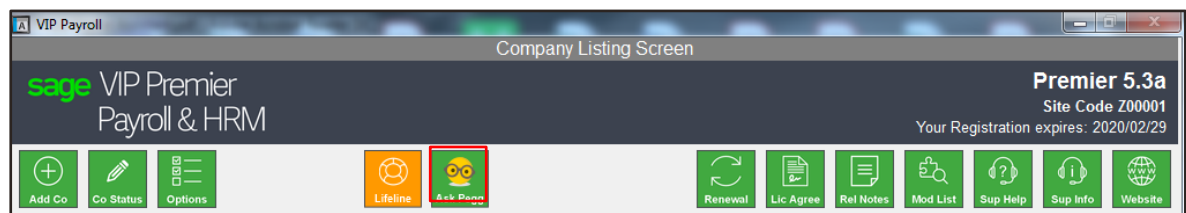
Sage VIP Classic and Premier Pegg



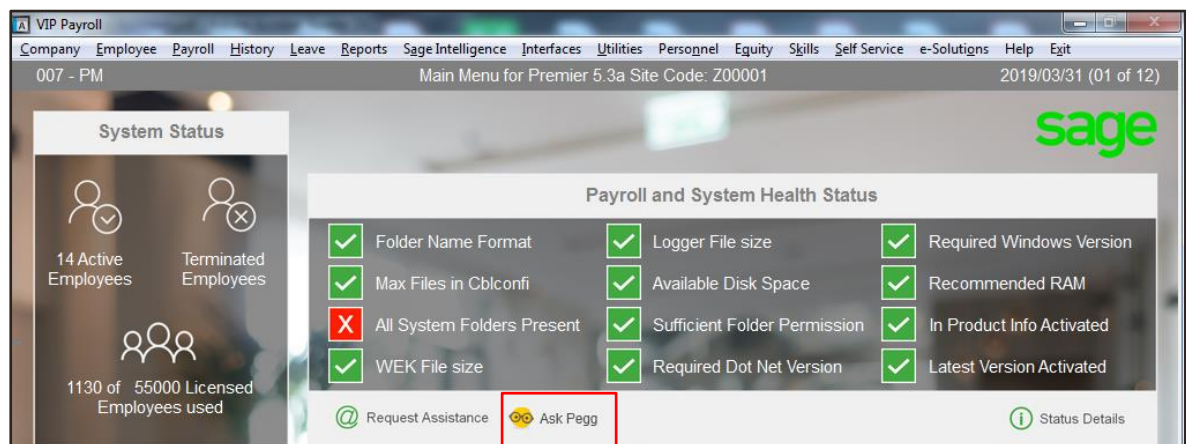
Pegg is our digital in app assistant available from Release 5.3a. Pegg uses AI to assist you with any support queries you may have.

You can access Pegg from the Company Listing Screen and from the Main Menu. Alternatively, you can type 'Pegg' in any of the routing entry fields on any payroll screen.

Company Listing Screen



Main Menu



Routing

